



PUERTO **UA** *Monitor*

How to install

Introduction

- This document contains information on how **PUERTO UA** *Monitor* (UaMonitor) should be install.

Installation will be done in a few minutes.

System Requirements

- Windows OS Requirements:
 - ✓ Windows 10
 - ✓ Windows 8.1
 - ✓ Windows 8
 - ✓ Windows 7
 - ✓ Windows Server 2012
 - ✓ Windows Server 2008

- Microsoft Office Requirements:
 - ✓ Office 2016
 - ✓ Office 2013
 - ✓ Office 2010
 - ✓ Office 2007

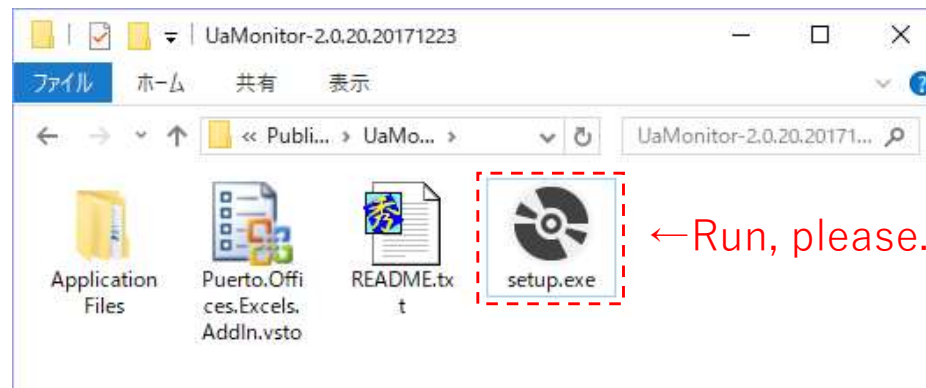
How to install

1. (Install the .NET Framework 4.5.1)
2. (Install the .NET Framework 4.5.1 Language(Japanese) Pack)
3. (Install Visual Studio 2010 Tools for Office Runtime)
4. Install UaMonitor

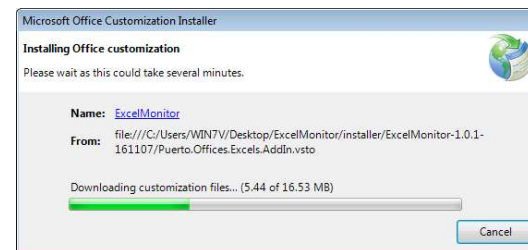
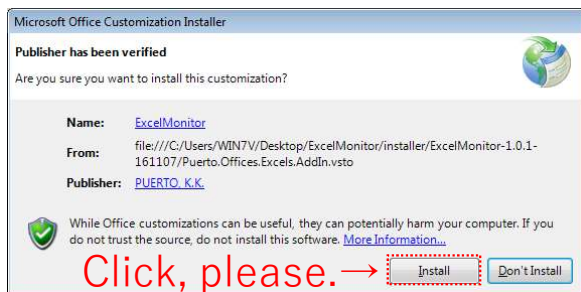
“Must be installed Step1-3 offline if it can't be installed on the network”

Install UaMonitor

- Run the UaMonitor installer (Setup.exe)



- Click "Install" button
The installation flow is as follows:





PUERIO

The image features a stylized logo for the word "PUERIO". The letters "P", "U", and "E" are rendered in a solid, vibrant blue. The letters "R", "I", and "O" are in a lighter, semi-transparent blue. A silhouette of a lighthouse is positioned behind the letter "I", with a bright yellow beam of light emanating from its top and extending horizontally across the top of the letters "R", "I", and "O". The entire logo is centered on a white background, which is framed by solid blue horizontal bars at the top and bottom.